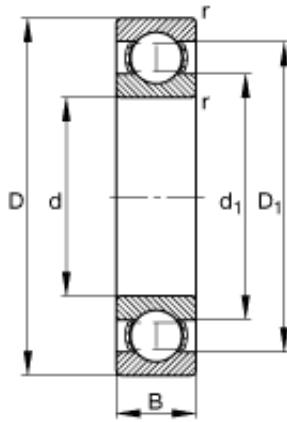




PRECISION BEARING ACCESSORIES SPAIN C...



9 mm x 24 mm x 7 mm FAG 609 deep groove ball bearings

Bearing No. 609

609 Bearing 2D drawings and 3D CAD models

Size	9x24x7 mm
Bore Diameter	9 mm
Outer Diameter	24 mm
Width	7 mm
d	9 mm
D	24 mm
B	7 mm
D ₁	19,6 mm
D _{a max}	22 mm
d ₁	14 mm
d _{a min}	11 mm
r _{a max}	0,3 mm
r _{min}	0,3 mm
m	0,015 kg / Weight
C _r	3900 N / Dynamic load rating (radial)
C _{0r}	1640 N / Static load rating (radial)
n _G	44500 1/min / Limiting speed
n _B	28500 1/min / Reference speed
C _{ur}	83 N / Fatigue limit load, radial